

MOUNTING INSTRUCTIONS:

SPRINTER

TOOLS NEEDED;

STRAIGHT BLADE SCREW DRIVER, 10MM SOCKET, 13MM SOCKET, 1 1/8" DEEP SOCKET



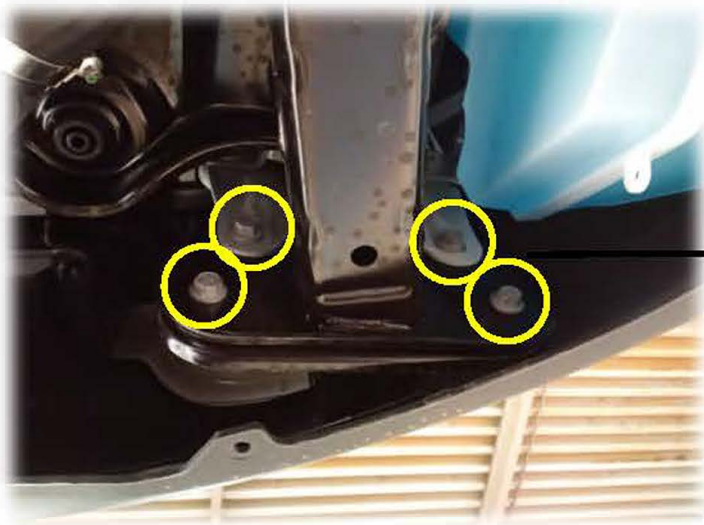
1) LOCATE THE AIR DAM UNDER THE BUMPER AND REMOVE. THIS WILL BE DISCARDED. REMOVE THESE 2 CLIPS AND INSTALL ON THE NEW AIR DAM SUPPLIED.



MOUNTING INSTRUCTIONS:

SPRINTER (PASSENGER SIDE BRACKET)

2) LOCATE THE FRAME END UNDER THE PASSENGER SIDE BUMPER . REMOVE THE FOUR BOLTS AS SHOWN.



3) LOCATE THE PASSENGER SIDE BRACKET (AS SEEN BELOW) INSERT IT UP IN BETWEEN THE END OF THE FRAME AND THE BUMPER CROSS MEMBER, REINSERT THE FOUR BOLTS AND TORQUE TO 50 FT/LBS



MOUNTING INSTRUCTIONS:

SPRINTER (DRIVER SIDE BRACKET)

4) LOCATE THE FRAME END UNDER THE DRIVER SIDE BUMPER. REMOVE THE FOUR BOLTS AS SHOWN.



5) LOCATE THE DRIVER SIDE BRACKET (AS SEEN BELOW) INSERT IT UP IN BETWEEN THE END OF THE FRAME AND THE BUMPER CROSS MEMBER, REINSERT THE FOUR BOLTS AND TORQUE TO 50 FT/LBS



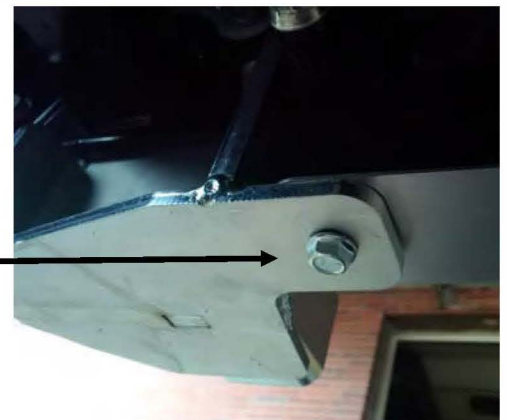
MOUNTING INSTRUCTIONS:

SPRINTER

VIEW FROM FRONT



6) INSERT NEW AIR DAM AND SECURE USING 2 OF THE ORIGINAL BOLTS THAT WERE REMOVED IN STEP 1 AND 2 BOLTS AND NUTS SUPPLIED



MOUNTING INSTRUCTIONS:

SPRINTER

7) INSERT THE EX -GUARD INTO THE 2 RECEIVERS AS SHOWN BELOW.



8) THREAD ON THE NUT ON BOTHE SIDES TO SECURE THE EX-GUARD IN PLACE AND TORQUE TO 150 FT/LBS THIS COMPLETES THE INSTALL.

